



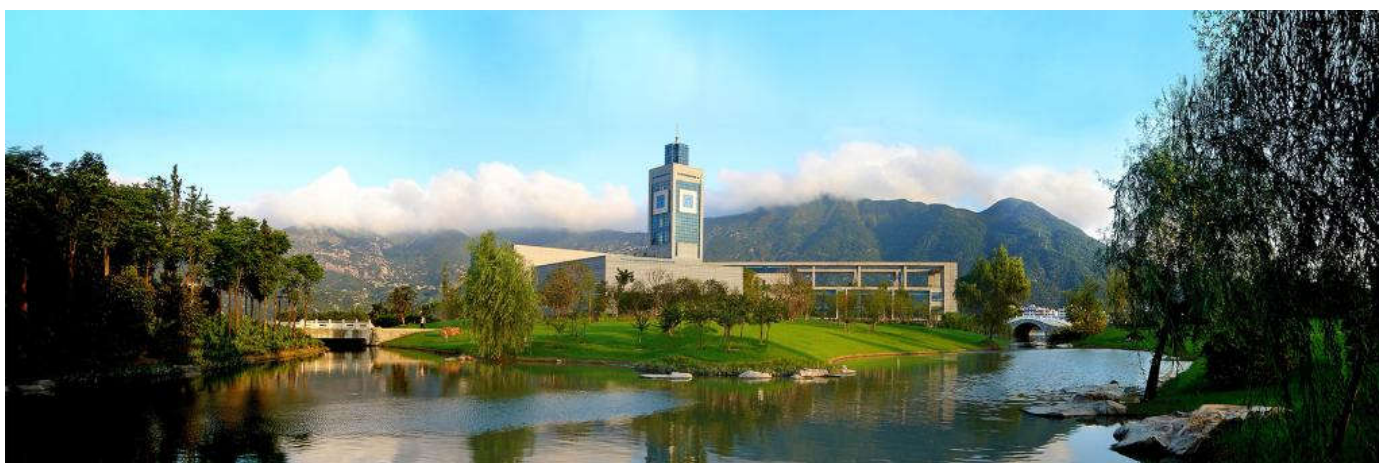
**Wenzhou University**



**SICAS**

## 留学生简章

# Prospectus for Overseas Students (Admission Open for 2018 Autumn Session)



## Table of Contents

<b>1. Overview of Wenzhou University.....</b>	<b>3</b>
<b>2. 5 Top Reasons to Study in Wenzhou University .....</b>	<b>9</b>
<b>3. Bachelor Program.....</b>	<b>10</b>
<b>4. Master program .....</b>	<b>11</b>
<b>5. Non-Degree Program .....</b>	<b>11</b>
<b>6. Student Life .....</b>	<b>12</b>
<b>7. Accommodation .....</b>	<b>14</b>
<b>8. Entry Requirements .....</b>	<b>16</b>
<b>9. Requirement for Application.....</b>	<b>16</b>
<b>10. Scholarship.....</b>	<b>17</b>
<b>11. Internship Opportunities .....</b>	<b>17</b>
<b>12. How to Apply.....</b>	<b>18</b>
<b>13. SICAS Students in Wenzhou .....</b>	<b>18</b>

## Overview of Wenzhou University

Wenzhou University is situated in Wenzhou, a coastal city in the south-eastern part of China which is the economic and cultural center as well as the transportation hub of the southern region of Zhejiang province, with Shanghai and Hangzhou to its north, Fujian and Guangdong to its south.

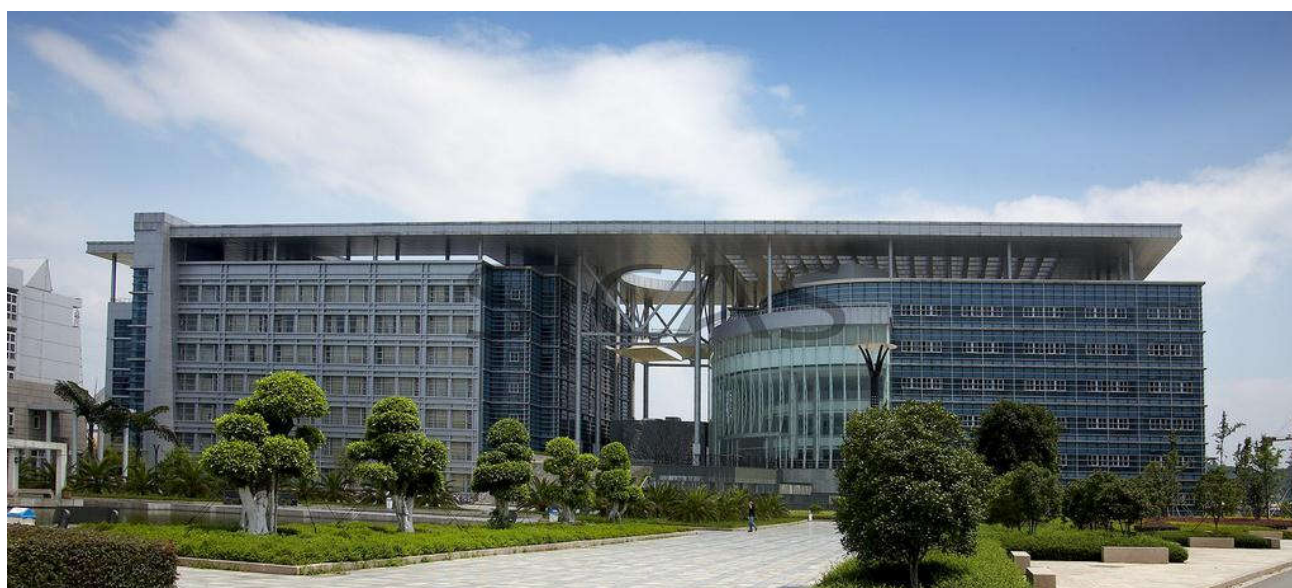
Located in such a beautiful and prosperous city, WZU is a comprehensive regional university equipped with programs in accordance with the demands of the market, thus making them more flexible and dynamic in talents training. Of all, WZU English-medium bachelor's degree programs International Economy and Trade (College of International Cooperation) and Marketing (College of International Cooperation) have been preferred among International students. Besides, 46 bachelor's degree programs as well as 20 master's degree programs, both taught in Chinese, have been growing in popularity recently. The non-degree programs Short-term Chinese Language Training, Training of Do Business To China and Trade-research and Study-tour Program are suitable for those who're interested in the study of Mandarin or doing business in China. Study at WZU and you will acquire providing an abundance of opportunities to obtain both systematic knowledge and practical experience, thus ensuring a bright career.



## Overview of Wenzhou University



## Overview of Wenzhou University



## Overview of Wenzhou University



## Overview of Wenzhou University



## Overview of Wenzhou University





## 5 Top Reasons to Study in Wenzhou University



### 1. Top-ranked University

There are over 2,500 colleges and universities in China, among which WZU ranks No.1 in the “application-oriented universities” category, top 10 in terms of the strength of its Entrepreneurship Education program, and top 6% by overall ranking.

### 2. Low tuition fee

### 3. More scholarship opportunities

### 4. Good reputation

- The teachers are responsible and kind.
- Colorful campus life.
- Chance to show their talent, there are sports club for international students.

### 5. Complete Infrastructures

## Bachelor Program

Type	Institute	Title
Science	College of Mathematics, Physics & Electronic Information Engineering	Software Engineering
	College of Chemistry and Material Engineering	Chemical Engineering & Technology
	College of Life & Environmental Science	Biotechnology
	College of Mechanical & Electrical Engineering	Mechanical Engineering
	College of Architecture & Civil Engineering	Civil Engineering
Art	College of Law & Political Science	Law (International Economic Law)
	College of Teacher Education	Early Childhood Education
	College of Fine Arts & Design	Fashion Design
	School of Business	International Economic and Trade
		Business Administration
	College of International Education	Chinese Language and Literature (Business Chinese)
		Business Administration (Aviation Management)
	College of Music	Music Performance
		Musicology and Dancology (Music Performance)
		Music (Music Education)
Music Teaching		

### Detailed information:

Duration	4 years
Instruction Medium	English
Registration Date	Autumn Intake: 8. October. 2018
Application Deadline	30. July. 2018
Tuition Fee	Science Program-RMB 20000/Year
	Arts Program-RMB 18000/Year

## Master program

Type	Institute	Title
Science	College of Mechanical & Electrical Engineering	Mechanical Engineering
	College of Architecture & Civil Engineering	Civil Engineering
	College of Chemistry and Material Engineering	Chemistry
	College of Life& Environmental Science	Chemical Biology
Environmental Engineering		
Art	College of Physical Education	Theory of Sports Pedagogy and Training
	College of Humanities Entrepreneurship	Entrepreneurship Education
	College of International Education	Master of Teaching Chinese to Speakers of Other Languages (MTC SOL)
	College of Humanities	English Language and Literature
Translation Studies (English, French, Japanese and Korean)		

### Detailed information:

Duration	3 years
Instruction Medium	English
Registration Date	Autumn Intake: 8. October. 2018
Application Deadline	30. July.2018
Tuition Fee	Science Program-RMB 22000/Year
	Arts Program-RMB 20000/Year

## Non-Degree Program

### Chinese Language Training:

This program is designed both for those who want to start learning the degree programs in Chinese language, and for those who want to learn Chinese for daily life, or life, or to improve their Chinese Language proficiency.

Chinese Language Learning					
Institute	Instruction Medium	Duration	Registration Date	Application Deadline	Tuition Fee
College of International Education	English	1 year	Oct-18	30-Jul-18	RMB 12000

## Student Life

A welcoming campus, colorful extracurricular activities, and a solid support structure to ensure you'll quickly feel at home.





## Accommodation

WZU provides comfortable on-campus accommodation with brand-new facilities and equipment to deliver an exceptional experience. It makes sure that you have a high living standards despite being away at home. There are two types of accommodation in International Students' Dormitory—Double Room & Triple Room—each with all necessary facilities and equipment.

### Accommodation Fee:

Type	Fee(RMB/Year)
Double Room	4000
Triple Room	2900

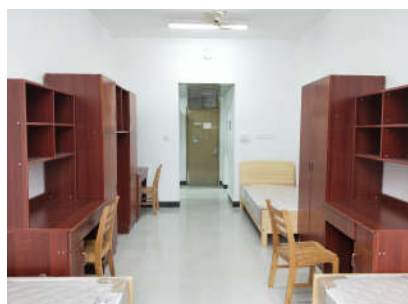
*Note: the expense of water gas electricity internet are not include.*

### Facilities:

- Dormitory--air conditioner, bed , closet, desk
- Bathroom--separate bathroom in each room
- Kitchen--refrigerator, microwave oven
- Laundry room--washing machine in common area

### Others:

- Water & Electricity Bill: charge money on campus card, you need to deposit the money in the card first so that the bill will deduct each month automatically. If you don't have money in the card and not charge it again, you can't open your room door.
- Wifi: choose SIM card of China Unicom in Wenzhou can use free wifi.



## Accommodation



## Entry Requirements

1. Non-Chinese citizens with a valid passport
2. High school graduate or equivalent to a Chinese high school graduate
3. Be in good health condition and above the age of 18

## Requirement for Application

### **1. Application form and visa application form**

### **2. Graduation certificate of high school**

Graduation certificate should be in Chinese or English. If not, it should be translated into Chinese or English and be notarized.

### **3. An official transcript from the college you have recently attended**

Official transcript should be in Chinese or English. If not, it should be translated into Chinese or English and be notarized.

### **4. Certificate of English proficiency test**

Applicants who apply for English taught program must provide the Certificate Letters that English is the learning language during high school study, or have the IELTS score 5.5 above or TOFEL score 75 above;

### **5. A photocopy of your passport**

**6. Bank statement** (normally the balance is enough for your first year tuition fee and accommodation fee)

**7. Health report** ( within the validation period)

**8. No Criminal Certificate** (If necessary)

**9. Personal Statement** (For scholarship and master applicant)

### **10. Passport-sized photo**

A passport-sized photo taken recently of the applicant.

### **Students who are now studying in China should offer the following documents in addition:**

◎ An agreement of transferring universities from the Office for International Students in which school or university you are studying now (must with common seal) and a recommendation letter from a teacher in the former school or university. About the resident permission, we will help the students to renew it when they register in the university, and won't do before the refrigeration date.

◎ Photocopy of your visa and residence permit in China.



## Scholarship

### Scholarship Type:

#### 1. Type A: Full Scholarship

The scholarship will be used to deducted your tuition fee starting from your first academic year on campus. Your academic and overall performance will be assessed annually. In the following years, scholarship will be offered based on the assessment result of your performance in the preceding year. After assessment, there are 3 scholarship types:

- First tier: One academic year tuition fee free
- Second tier: One academic year 2/3 tuition fee free free
- Third tier: One academic year 1/3 tuition fee free

First Class Scholarship students will be candidate for the First Class Scholarship through the academic years. If falls to Second tier, Third tier, or self-finance in second year, are still eligible to apply for the first class scholarship in the following years according to performance.

#### 2. Type B: Partial Scholarship-1

You will get a 30% deduction of your tuition fee each year from 1st to 4th year.

#### 3. Type C: Partial Scholarship-2

You will get a 30% deduction of your tuition fee each year from 2nd to 4th year.

## Internship Opportunities

The ability to put theory into practice is highly valued by employers in today's competitive job market. In response to that, WZU put an emphasis on application oriented teaching method.

What's more, its connections with government bodies and renown multinational corporations enable it to provide plenty of social practice opportunities and internship for overseas students so as to enhance their employability and transferable skills, such as communication, adaptability and even language skills. All of these factors account for its outstanding employment rate among over 300,0 universities in China.

## How to Apply

Study In China Admission System ( SICAS, <http://www.sicas.cn> ) is authorized exclusively to help international students on getting admission to Wenzhou University in a safe, efficient and accurate way.

Select a course on SICAS website([www.sicas.cn](http://www.sicas.cn)) and enter the course page. Click Apply Now button, and then follow the following steps:

- Step 1: Complete Application form Online
- Step 2: Upload Required Application Documents
- Step 3: Pay Fees/ Send to University
- Step 4: Track Admission Status

### Contact Us:↵

Tel./Whatsapp: +86 15318861816

Email: [application@sicas.cn](mailto:application@sicas.cn)↵

[service@sicas.cn](mailto:service@sicas.cn)↵

The admission letter will be issued in three to seven working days if you are accepted by WZU after you submit the documents, and JW202 will takes around 15 to 20 working days. \*Chinese and International Official holidays and Festivals are not included for the calculation of time.

## SICAS Students in Wenzhou

Airport Pick-up



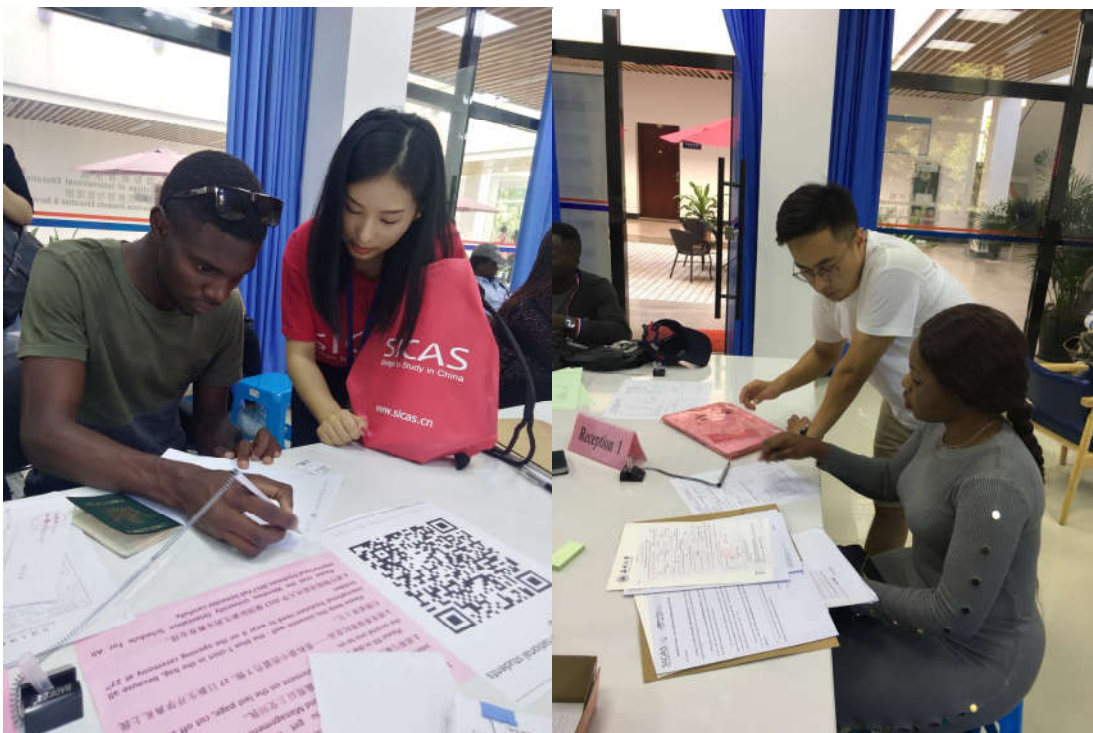




Campus registration







## Dormitory Arrangement











## Bank Card Opening







## Physical Examination



## Residence Permit Registration



## Campus Life

















